



COMPASS

Queens Luxury Report

June 09 - 15, 2025, Residential Contracts \$1.25M+

Photo: 46-30 Center Blvd, Unit PH8

The Queens luxury real estate market, defined as all properties priced \$1.25M and above, saw 16 contracts signed this week, made up of 3 condos, and 13 houses. The previous week saw 15 deals. For more information or data, please reach out to a Compass agent.

\$1,785,606
Average Asking Price

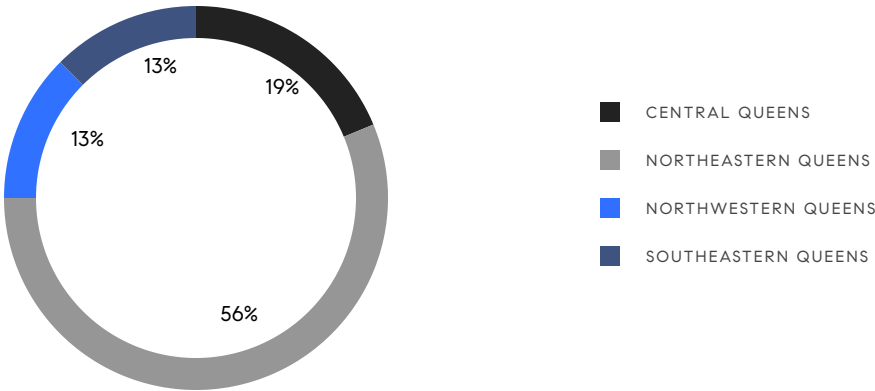
\$1,544,000
Median Asking Price

\$902
Average PPSF

0%
Average Discount

\$28,569,688
Total Volume

53
Average Days On Market



3
Condo Deal(s)

0
Co-op Deal(s)

13
Single-Family Deal(s)

\$2,548,296
Average Asking Price

\$0
Average Asking Price

\$1,609,600
Average Asking Price

\$2,588,000
Median Asking Price

\$0
Median Asking Price

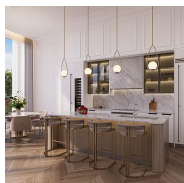
\$1,499,000
Median Asking Price

\$1,321
Average PPSF

\$797
Average PPSF

1,997
Average SqFt

2,285
Average SqFt

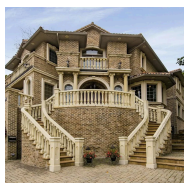


78-29 Austin St, Unit PH1B

Forest Hills

Contract Signed

Type	Condo	Price	\$3,247,650	Sq. Ft.	2,884	Beds	4
DOM	-	Initial	\$3,247,650	PPSF	\$1,127	Baths	3.5



49-16 Annadale Lane

Little Neck

Contract Signed

Type	House	Price	\$2,999,000	Sq. Ft.	6,600	Beds	5
DOM	273	Initial	\$2,999,000	PPSF	\$455	Baths	5



50-01 5th St, Unit PH4A

Long Island City

Contract Signed

Type	Condo	Price	\$2,588,000	Sq. Ft.	1,542	Beds	2
DOM	49	Initial	\$2,588,000	PPSF	\$1,678	Baths	2

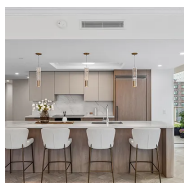


187-11 Aberdeen Road

Jamaica Estates

Contract Signed

Type	House	Price	\$1,859,000	Sq. Ft.	2,100	Beds	3
DOM	63	Initial	\$1,859,000	PPSF	\$886	Baths	2

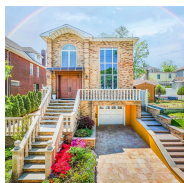


78-29 Austin St, Unit 402

Forest Hills

Contract Signed

Type	Condo	Price	\$1,809,238	Sq. Ft.	1,565	Beds	3
DOM	-	Initial	\$1,809,238	PPSF	\$1,157	Baths	2



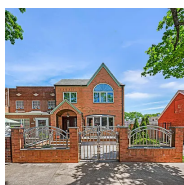
154-12 14th Avenue

Beechhurst

Contract Signed

Type	House	Price	\$1,798,000	Sq. Ft.	2,000	Beds	4
DOM	25	Initial	\$1,798,000	PPSF	\$899	Baths	4

Compass is a licensed real estate broker and abides by Equal Housing Opportunity laws. All material presented herein is intended for informational purposes only. Information is compiled from sources deemed reliable but is subject to errors, omissions, changes in price, condition, sale, or withdrawal without notice. No statement is made as to the accuracy of any description. All measurements and square footages are approximate. This is not intended to solicit property already listed. Nothing herein shall be construed as legal, accounting or other professional advice outside the realm of real estate brokerage.

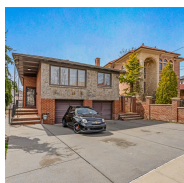


22-69 21st St

Astoria

Contract Signed

Type	House	Price	\$1,675,000	Sq. Ft.	2,000	Beds	3
DOM	17	Initial	\$1,675,000	PPSF	\$838	Baths	2.5



732A Point Crescent

Whitestone

Contract Signed

Type	House	Price	\$1,588,000	Sq. Ft.	1,336	Beds	3
DOM	56	Initial	\$1,588,000	PPSF	\$1,189	Baths	3

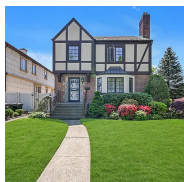


210-16 36th Avenue

Bayside

Contract Signed

Type	House	Price	\$1,500,000	Sq. Ft.	1,620	Beds	3
DOM	18	Initial	\$1,500,000	PPSF	\$926	Baths	3

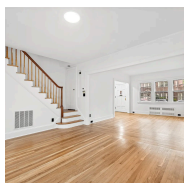


182-04 80th Drive

Jamaica Estates

Contract Signed

Type	House	Price	\$1,499,000	Sq. Ft.	1,766	Beds	3
DOM	29	Initial	\$1,499,000	PPSF	\$849	Baths	2.5

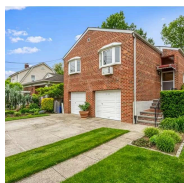


408 Burns Street

Forest Hills Gardens

Contract Signed

Type	House	Price	\$1,395,000	Sq. Ft.	2,000	Beds	4
DOM	37	Initial	\$1,295,000	PPSF	\$698	Baths	2



32-26 165th Street

Flushing

Contract Signed

Type	House	Price	\$1,388,800	Sq. Ft.	2,239	Beds	4
DOM	13	Initial	\$1,388,800	PPSF	\$621	Baths	3

Compass is a licensed real estate broker and abides by Equal Housing Opportunity laws. All material presented herein is intended for informational purposes only. Information is compiled from sources deemed reliable but is subject to errors, omissions, changes in price, condition, sale, or withdrawal without notice. No statement is made as to the accuracy of any description. All measurements and square footages are approximate. This is not intended to solicit property already listed. Nothing herein shall be construed as legal, accounting or other professional advice outside the realm of real estate brokerage.



262-55 Grand Central Parkway

Little Neck

Contract Signed

Type	House	Price	\$1,388,000	Sq. Ft.	2,600	Beds	4
DOM	36	Initial	\$1,388,000	PPSF	\$534	Baths	3



50-05 212th St

Bayside

Contract Signed

Type	House	Price	\$1,295,000	Sq. Ft.	1,834	Beds	4
DOM	47	Initial	\$1,295,000	PPSF	\$707	Baths	3.5



154-32 24th Road

Flushing

Contract Signed

Type	House	Price	\$1,280,000	Sq. Ft.	-	Beds	3
DOM	29	Initial	\$1,280,000	PPSF	-	Baths	2



3816 211th Street

Bayside

Contract Signed

Type	House	Price	\$1,260,000	Sq. Ft.	1,321	Beds	3
DOM	39	Initial	\$1,260,000	PPSF	\$954	Baths	3

Compass is a licensed real estate broker and abides by Equal Housing Opportunity laws. All material presented herein is intended for informational purposes only. Information is compiled from sources deemed reliable but is subject to errors, omissions, changes in price, condition, sale, or withdrawal without notice. No statement is made as to the accuracy of any description. All measurements and square footages are approximate. This is not intended to solicit property already listed. Nothing herein shall be construed as legal, accounting or other professional advice outside the realm of real estate brokerage.